



 **BIOCLEAR**
PRODUCT CATALOG

TABLE OF CONTENTS

- About Bioclear.....1
- Tooth and Surface Specific (TSS) Kit..... 2-3
- Black Triangle System..... 4-7
- 360° Veneer Matrix.....8
- HD vs Original Anterior Matrix Systems9
- HD Anterior Matrix System..... 10-12
- Original Anterior Matrix System 13-15
- Evolve Matrix System 16-19
- Diamond Wedges..... 20-21
- TwinRing22
- HeatSync..... 23-24
- Blaster and Accessories 25-26
- Rockstar Polish System 27-28
- Instruments..... 29-30
- TruContact 2.0..... 31
- Marketing Materials..... 32
- Bioclear Learning Center 33-34

EXPANDING THE POSSIBILITIES OF RESTORATIVE DENTISTRY

Bioclear Matrix Systems represents a major advance over traditional G.V. Black dentistry. Applying principles of structural engineering and advanced materials science, Bioclear helps dental professionals achieve healthy, functional, and esthetically beautiful smiles for their patients. With the Bioclear Method and products, patients enjoy a minimally invasive approach, resulting in long-lasting and esthetically pleasing composite restorations. And dentists, through the Bioclear Learning Center, receive personalized hands-on training at education centers throughout the world and online.

TOOTH & SURFACE SPECIFIC (TSS) KIT

SKU #828011



The Bioclear TSS kit is the culmination of two decades of technological and clinical advancements which will reinvent everyday anterior composite restorations. The TSS kit's focus is on anterior composites whenever space closure (black triangles, peg laterals and diastemas) is not needed. It is the world's first fully anatomic matrix system. TSS (Tooth and Surface Specific) matrices have all the complexities of anterior teeth built into each matrix, such as cingulum shape, Incisal embrasures that match the unique shapes of the mesial and distal of incisors, and the three facial planes of maxillary incisor teeth: gingival, middle and incisal thirds. The above features and benefits are only possible when the matrix is designed for each side of each incisor tooth. The TSS system is designed for general dentists, pediatric dentists

and cosmetic dentists. The Tooth & Surface Specific (TSS) Kit is an advanced anterior matrix system designed to help dentists restore anterior decay with precision and efficiency. Its patented facial and lingual overlap technology provides superior adaptation and contour for more natural, esthetic results. The kit includes tooth-specific matrices for teeth #6–11 (mesial and distal) and universal matrices for small and medium lower incisors. Because each tooth is uniquely shaped, the two matrix sizes allow for differentiation and adaptability— functioning like an expandable form to achieve a precise fit. Small and medium diamond wedges ensure secure placement and optimal contacts. The TSS Kit simplifies anterior restorations, reduces chair time, and delivers consistent esthetic outcomes.

Indications:

- Small to large anterior decay (Class III)
- Wrap-around decalcification or mottled enamel cases
- Composite veneers
- Direct composite crowns

Mandatory Viewing



TOOTH & SURFACE SPECIFIC REFILLS



25 COUNT

TOOTH	SKU
#6M	328011.25
#6D	328021.25

TOOTH	SKU
#7M	328031.25
#7D	328041.25

TOOTH	SKU
#8M	328051.25
#8D	328061.25

TOOTH	SKU
#9M	328071.25
#9D	328081.25

TOOTH	SKU
#10M	328091.25
#10D	328101.25

TOOTH	SKU
#11M	328111.25
#11D	328121.25

TOOTH	SKU
(S)LI	328131.25
(M)LI	328141.25

50 COUNT

TOOTH	SKU
#6M	328011.50
#6D	328021.50

TOOTH	SKU
#7M	328031.50
#7D	328041.50

TOOTH	SKU
#8M	328051.50
#8D	328061.50

TOOTH	SKU
#9M	328071.50
#9D	328081.50

TOOTH	SKU
#10M	328091.50
#10D	328101.50

TOOTH	SKU
#11M	328111.50
#11D	328121.50

TOOTH	SKU
(S)LI	328131.50
(M)LI	328141.50



SMALL SIZE SKU

Regular #112011
Long #112061



MEDIUM SIZE SKU

Regular #112021
Long #112071

BLACK TRIANGLE SYSTEM



Tip:



BT Matrices can be used for the following procedures:

- Diastema Closures
- Peg Laterals
- Bioclear 360° Veneers
- Black Triangle Closures

Scan the QR Code or visit <https://bioclear.live/i4j> to view instructional videos.

The Black Triangle System enables black triangle closure faster than with the original Bioclear matrices.

BT MATRIX

Includes blue, green, yellow, & pink



Black Triangle matrices are custom designed for black triangle treatment and require no trimming prior to seating.

BT GAUGE

SKU #500111



The BT Gauge is for use with the color-coded BT Matrices. Use of the gauge with these color-coded matrices is designed to make black triangle closures simpler and more efficient.

DISCLOSING SOLUTION

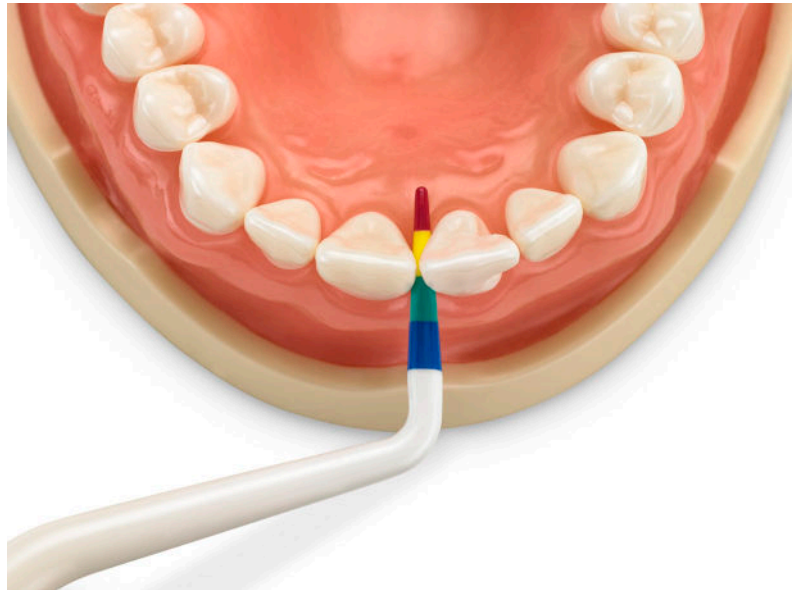
SKU #715091



Disclosing solution is designed for discovery of cracks and biofilm for blasting. Newer Biofilm stains pink. Older biofilm & cracks (more than 24 hours) stain purple, aiding the clinician in properly educating patients about oral hygiene & restorative needs.

BLACK TRIANGLE SYSTEM

A color-coded gauge and matrices make choosing the correct curvature for gingival embrasure closure simple and predictable. Curvature is indicated by colors at the top of the matrix and correspond with a gauge that, when inserted into the black triangle, indicates which curvature to use.



The matrices come in two sizes (large incisor and small incisor) and four curvatures allowing you to treat the entire anterior sextant, canine to canine, and both upper and lower arches with strong esthetically pleasing results.

SMALL BT

For mandibular incisors and small maxillary lateral incisors.



LARGE BT

Are taller and wrap the tooth more than the Small Incisor BT Matrices. They should be used for maxillary central incisors, large maxillary lateral incisors, maxillary and mandibular canines, and maxillary and mandibular bicuspids.



BLACK TRIANGLE

BLACK TRIANGLE KIT SKU #801003



Includes: 10ct Small Blue – 10ct Small Green – 10ct Small Yellow – 10ct Small Pink – Black Triangle Gauge – TruContact Sample Pack
10ct Large Blue – 10ct Large Green – 10ct Large Yellow – 10ct Large Pink – 3ml Dual-Color Disclosing Solution

BT PROCEDURE KIT SKU #801010



Includes: 3ct Large Blue – 3ct Large Green – 3ct Large Yellow – 3ct Large Pink – 3ct Small Blue – 3ct Small Green
3ct Small Yellow – 3ct Small Pink – Black Triangle Gauge

BLACK TRIANGLE REFILLS



BLUE

Can close up to 2.5 mm of space

SIZE SKU

Small #301061

Large #301062



GREEN

Can close up to 2 mm of space

SIZE SKU

Small #301071

Large #301072



YELLOW

Can close up to 1.5 mm of space

SIZE SKU

Small #301081

Large #301082



PINK

Can close up to 1 mm of space

SIZE SKU

Small #301091

Large #301092

360° VENEER MATRIX

SKU #317011



The Bioclear 360° Veneer are specially designed to create a two part form around the tooth by using both mesial and distal abutting matrices. This form creates a mold around the tooth, sealing the gingival margins and enabling heated composite resin to completely envelop the tooth with an impressively durable, solid, pearlescent shell of composite. That monolithic, solid shell with the Mylar finish eliminates the inherent weaknesses of hand layered, free form, or indirect, putty matrix techniques of the past.

HD VS ORIGINAL ANTERIOR MATRIX SYSTEMS

Bioclear Anterior Matrices allow for a modern approach to composite dentistry. Advantages of Bioclear Anterior Matrices include:

- Predictable restoration or change of a tooth's emergence profile;
- A shape which allows for injection/placement of composite into the embrasure without fear of leaving an overhanging margin;
- A mylar finish which leaves the interproximal composite smooth and properly contoured;
- A shape that creates firm stabilization and a full marginal seal when seated into the sulcus which make them easy to use wedge-free when closing small spaces with a full contact.

HD VS. ORIGINAL

stiffness vs. flexibility

75 μ vs. 50 μ

The difference between these systems comes down to flexibility vs stiffness. The Original is 50 μ thick, and the HD is 75 μ thick. Both Original and HD are offered in the standard A-series and the DC-series

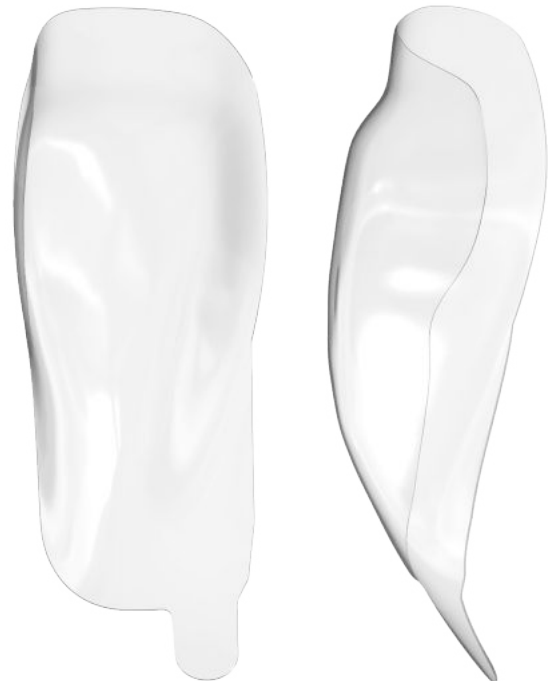
ANTERIOR (A-SERIES)

Has less emergence profile for restoring smaller spaces.



DIASTEMA CLOSURE (DC-SERIES)

Has more emergence profile for closing larger spaces.



HD ANTERIOR

COMPLETE HD ANTERIOR KIT SKU #820197



Includes: 15ct HD A101 Upper Mesial – 15ct HD A102 Upper Distal – 15ct HD A103 Small Incisor Universal – 15ct HD A104 Canine Mesial – 15ct HD A105 Canine Distal – 15ct HD DC201 Diastema Closure Upper Mesial – 15ct HD DC202 Diastema Closure Upper Distal – 15ct HD DC203 Diastema Closure Small Incisor – 8ct Diamond Wedge Small – 8ct Diamond Wedge Medium

STARTER HD ANTERIOR KIT SKU #820196



Includes: 15ct HD A101 Upper Mesial – 15ct HD A102 Upper Distal – 15ct HD A103 Small Incisor Universal – 15ct HD DC201 Diastema Closure Upper Mesial – 15ct HD DC202 Diastema Closure Upper Distal – 15ct HD DC203 Diastema Closure Small Incisor – 8ct Diamond Wedge Small – 8ct Diamond Wedge Medium

HD ANTERIOR MATRIX

A-SERIES SHAPES 75 μ



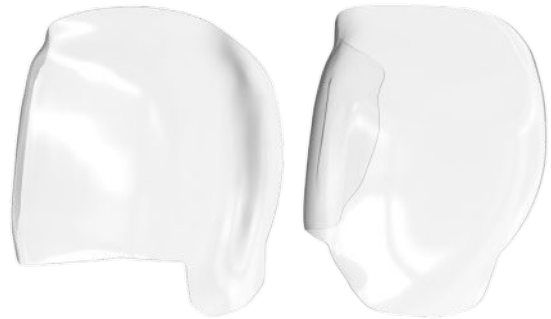
HD A101 - Upper Mesial
SKU #320011



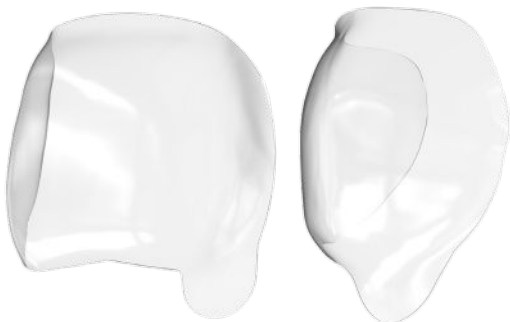
HD A102 - Upper Distal
SKU #320021



HD A103 - Small Incisor
SKU #320031



HD A104 - Canine Mesial
SKU #320041



HD A105 - Canine Distal
SKU #320051

HD A SERIES REFILL

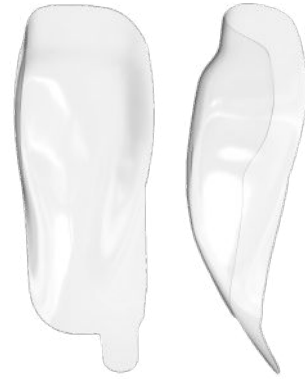


HD DIASTEMA CLOSURE MATRIX

DC-SERIES SHAPES 75μ



HD DC201 - Upper Mesial
SKU #319011



HD DC202 - Upper Distal
SKU #319021



HD DC203 - Small Incisor
SKU #319031

HD DC SERIES REFILL



ORIGINAL ANTERIOR

COMPLETE ANTERIOR KIT

SKU #801027



Includes: 15ct A101 Upper Mesial – 15ct A102 Upper Distal – 15ct A103 Small Incisor Universal – 15ct A104 Canine Mesial – 15ct A105 Canine Distal – 15ct DC201 Diastema Closure Upper Mesial – 15ct DC202 Diastema Closure Upper Distal – 15ct DC203 Diastema Closure Small Incisor – 15ct DC204 Extra Large Mesial Diastema Closure – 16ct Diamond Wedge Small – 16ct Diamond Wedge Medium – 16ct Diamond Wedge Large – 16ct Diamond Wedge Extra Large – 1ct TruContact Red – 1ct TruContact Orange – 1ct TruContact Blue

ORIGINAL ANTERIOR MATRIX

A-SERIES SHAPES 50 μ



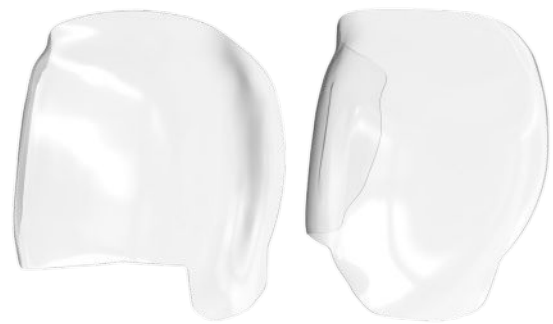
A101 - Upper Mesial
SKU #301011



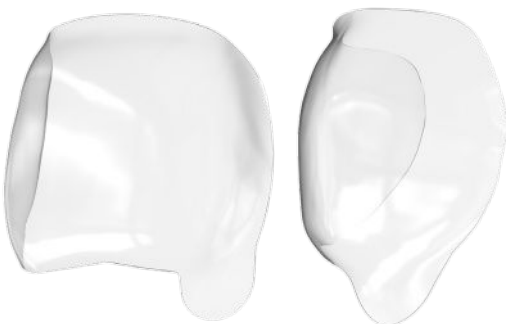
A102 - Upper Distal
SKU #301021



A103 - Small Incisor
SKU #301031



A104 - Canine Mesial
SKU #301041



A105 - Canine Distal
SKU #301051

ORIGINAL A SERIES REFILL

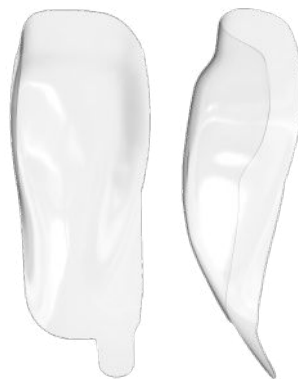


DIASTEMA CLOSURE MATRIX

DC-SERIES SHAPES 50μ



DC201 - Upper Mesial
SKU #302011



DC202 - Upper Distal
SKU #302021



DC203 - Small Incisor
SKU #302031



DC204 - Extra Large Mesial
SKU #302041

ORIGINAL DC SERIES REFILL



EVOLVE MATRIX SYSTEM

Following the legacy of the Biofit HD Matrix Series, the Evolve Matrices have the same benefits and additional features for posterior cases.

The new features of the Bioclear Evolve Matrix Series include:

- Three emergence profile shapes that are color-coded on the tab
- Matrix heights printed on the matrix for quick identification
- Extra-flared quick-release tabs on the buccal and lingual surfaces that are easier to find and use
- A wide array of sizes (heights) available (the black premolar comes in 5, 6, 7, 8, and 10mm's, the blue molar comes in 5, 6, 7, 8, and 9mm's and the orange molar comes in 6, 7, and 9mm's.



BLUE MOLAR

Can be used for anything you would typically use a Biofit matrix for and more.



ORANGE MOLAR

Created for instances where the Blue Evolve matrices invert. This matrix features a flatter emergence profile curvature than the Blue Evolve.



BLACK PREMOLAR

Shaped specifically for premolar teeth, these matrices can be used anywhere you would typically use a Biofit matrix or BT matrices on premolars.



EVOLVE MATRIX SYSTEM

EVOLVE MATRIX

Includes black, blue, and orange



The Bioclear Evolve Matrices have three different emergence profiles to fit a wider variety of cases and tooth shapes with less interproximal and subgingival finishing required than most other brands of matrices. The printed height on the matrix matches with the Evolve Matrix Height Indicator and makes choosing the correct matrix easy and quick.

TWINRING

SKU #208042



The TwinRing is designed for use in sectional Class II matrix adaptation and can be used with any matrix. The unique design allows the TwinRing to adapt to a variety of tooth types and shapes; apply a strong, even tension; and have great form memory, even after hundreds of uses.

DIAMOND WEDGES

Includes small, medium, large, xl, and deep caries or furcal in regular and long



The Bioclear Diamond Wedge is designed to solve many of the difficulties in using traditional, rigid wedges. The flexibility of the Diamond Wedge creates an excellent marginal adaptation and allows for easier placement. The Diamond Wedge is offered in both Original and Long.

ADJUSTABLE PUSH-PULL

SKU #500132



The Adjustable Push-Pull is a posterior instrument that is designed to expand or contract to fit a variety of preparation sizes in order to expand and oppose Evolve and Biofit matrices to ensure tight broad contacts.

TWINRING FORCEPS

SKU #500081



The Bioclear TwinRing Forceps are specially engineered for use with the Bioclear TwinRings.

EVOLVE MATRIX HEIGHT INDICATOR (EMHI)

SKU #500122



The Evolve Matrix Height Indicator (EMHI) is designed to guide matrix selection and curing. The indicator has two uses:
Matrix Height Indicator: Numbers are printed on the indicator so the correct Evolve matrix is chosen the first time.
Go/No-Go Indicator: The colored tip indicates if a cavity prep can be cured in one layer or if more must be used.

EVOLVE ALL-IN-ONE KIT SKU #827171



Includes: 25ct Molar Blue 5mm – 25ct Molar Blue 6mm – 10ct Molar Blue 7mm – 5ct Molar Blue 8mm – 5ct Molar Blue 9mm – 10ct Molar Orange 6mm – 10ct Molar Orange 7mm – 6ct Molar Orange 9mm – 25ct Premolar Black 5mm – 25ct Premolar Black 6mm – 10ct Premolar Black 7mm – 6ct Premolar Black 8mm – 6ct Premolar Black 10mm – 25ct Diamond Wedge Small – 50ct Diamond Wedge Medium – 25ct Diamond Wedge Large – 10ct Diamond Wedge Extra Large – 10ct Diamond Wedge Deep Caries – 6ct Diamond Wedge Long Small – 6ct Diamond Wedge Long Medium – 6ct Diamond Wedge Long Large – 6ct Diamond Wedge Long Extra Large – 6ct Diamond Wedge Long Furcal – 2ct TwinRing Universal – 1ct TwinRing Forceps – 1ct Adjustable Push-Pull – 1ct Evolve Matrix Height Indicator

EVOLVE POSTERIOR MATRIX

REFILLS



BLACK PREMOLAR

These matrices are shaped specifically for premolar teeth.

SIZE SKU

5mm	#327211
6mm	#327221
7mm	#327231
8mm	#327241
10mm	#327261



BLUE MOLAR

Can be used for anything you would typically use a Biofit matrix for and more.

SIZE SKU

5mm	#327012
6mm	#327022
7mm	#327032
8mm	#327042
9mm	#327052



ORANGE MOLAR

Created for instances where the Blue Evolve matrices invert. This matrix features a flatter emergence profile curvature than the Blue Evolve.

SIZE SKU

6mm	#327131
7mm	#327141
9mm	#327151

DIAMOND WEDGES

The Bioclear Diamond Wedge is designed to solve many of the difficulties in using traditional, rigid wedges.

The Diamond Wedge requires less effort to place than traditional wedges due to the diamond shaped cut-out in the tip, which collapses during insertion. The wedge then springs open once through the embrasure, creating a tight seal and preventing the wedge from backing out.



While still maintaining strong tooth separation, the flexibility of the Diamond Wedge creates an excellent marginal adaptation which eliminates the uncontrolled flow of excess composite and minimizes clean up after the composite has been cured.



The Diamond Wedge is offered in both Original and Long. The Original Diamond Wedge is intended for most cases. The Long Diamond Wedge is approximately 2mm longer than the Original wedge and is intended to be used when working on wider molars. Typically long wedges are used in conjunction with the Orange Evolve matrices.

DIAMOND WEDGE KIT SKU #812001



Includes: 16ct Diamond Wedge Small – 16ct Diamond Wedge Medium – 16ct Diamond Wedge Large – 16ct Diamond Wedge Extra Large – 16ct Diamond Wedge Deep Caries

DIAMOND WEDGE

REFILLS



SMALL
SIZE SKU
Regular #112011
Long #112061



MEDIUM
SIZE SKU
Regular #112021
Long #112071



LARGE
SIZE SKU
Regular #112031
Long #112081



EXTRA LARGE
SIZE SKU
Regular #112041
Long #112091



DEEP CARIES/FURCAL
SIZE SKU
Regular - Deep Caries #112051
Long - Furcal #112101

TWINRING UNIVERSAL



The TwinRing Universal is a major advancement in design and function that will be a welcome upgrade to your Class II composite procedure. Three benefits will become immediately apparent the first time you experience this elegant tool.

First, the anti-slip technology is impressive. The TwinRing Universal is rock solid on teeth that would never retain a separator in the past. Say goodbye to the separator flying off the tooth.

Second, the separation power has been shown to surpass other traditional separators out of the package, but more importantly the twin Nitinol springs do not stretch out over time. The long-term separation power will significantly outperform standard separators for priceless peace of mind.

Third, instead of needing a separate premolar and molar separator, the Universal should be the only separator you will need for nearly every Class II.

The unique design allows the TwinRing Universal to adapt to a variety of tooth types and shapes, even short molars, short premolars, primary molars, and on top of rubber dam clamps. The geometry of the ring causes it to apply a strong, even tension that assists in the separation of the teeth; creates a strong seal with the matrix without collapsing the matrix into the cavity; and allows for a superior infinity edge margin when used with the Bioclear Matrix and Diamond Wedge. The structural design of the TwinRing Universal causes it to have excellent form memory; it is guaranteed to retain its original shape without warping, even after hundreds or thousands of uses, and phenomenal grip, even on short teeth.

HEATSYNC

One of the five pillars of the Bioclear Method is the Injection Molding Technique using heated composite. The HeatSync is the only heater designed with the injection molding process in mind. The HeatSync composite warmer is a must for creating void free injection molded composites.

HEATSYNC

SKU #414011



HEATSYNC MINI

SKU #417013



155°F / 68°C

Due to the large anodized aluminum heat-transfer top, the HeatSync heats dental materials to the optimum working temperature of 155°F / 68°C quickly and self-regulates all day.

LARGE CAPACITY

The HeatSync has ample space for all the dental materials needed for restorative cases. The layout of the full-size heater facilitates the heating of two compule guns, two syringes, and up to six extra compules in the top oven.

ERGONOMIC DESIGN

The ergonomic design of the HeatSync's heating slots ensures that the compule guns and syringes are easy to handle when placing into and removing from the unit.

EASY TO CLEAN

The HeatSync is easy to clean; the removable heat-transfer top is made of the highest quality autoclavable materials.

HEATSYNC



- Aluminum Heat-Transfer Top
- Ergonomic Syringe Slots
- Compule Oven
- Ergonomic Composite Gun Slots

HEATSYNC COMPOSITE GUN SKU #714011



The HeatSync Composite Gun is fully comprised of heat-safe materials which do not transfer heat and are therefore safe for use on patients immediately after removal from the HeatSync



- Compule Oven
- Top Warming Unit
- Silicone Hot Pad
- Heat-Safe Compule Gun (2 included)
- Base Warming Unit

FOR REPLACEMENT PARTS, CONTACT YOUR DISTRIBUTOR

BLASTER

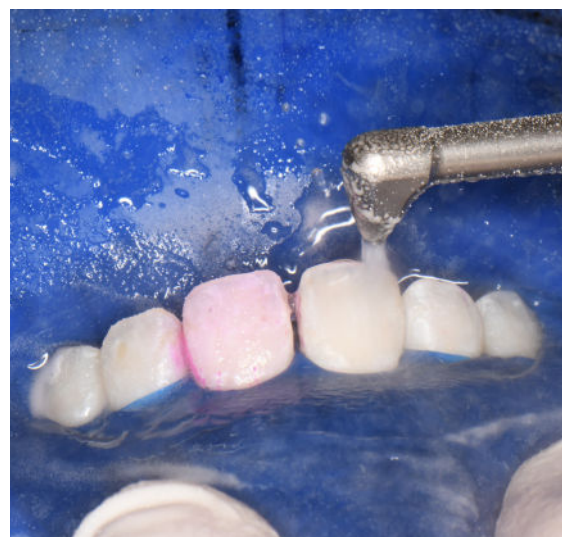
SKU #415011



The Bioclear Blaster is the perfect combination of minimally invasive yet effective cleaning power, ergonomic design, easy installation, and adaptability. Using a powerful and effective Aluminum Trihydroxide blasting slurry, the Blaster efficiently removes the toughest biofilm without damaging the enamel surface. The Bioclear Blaster is easy to move between operatories and plugs directly into your dental control unit using any KaVo Multiflex type swivel connection. In addition, the swivel provides a full 360° rotation to reduce tubing drag and wrist strain!



After application of Bioclear Dual Color Disclosing Solution



Bioclear Blaster during removal of biofilm stained by Bioclear Dual Color Disclosing Solution

Clinical images provided by Dr. David Clark

BLASTER ACCESSORIES

BIOCLEAR DUAL COLOR DISCLOSING SOLUTION

SKU #715091

Disclosing solution for discovery of cracks and biofilm for blasting. Newer Biofilm stains pink. Older biofilm & cracks (more than 24 hours) stain purple, aiding the clinician in properly educating patients about oral hygiene & restorative needs.

Each bottle contains 59 ml of disclosing solution.



BIOCLEAR BLASTING POWDER

SKU #715031

Aluminum-Trihydroxide powder for use with the Bioclear Blaster. This powder is soft enough that it does not remove tooth structure, but hard enough that it fully removes biofilm. Each bottle contains 6 oz of blasting powder.



BLASTER TIP REPLACEMENT

SKU #715011

Replacement tip for the Bioclear Blaster.



SWIVEL ATTACHMENT

SKU #715021

Replacement swivel attachment for the Bioclear Blaster. This attachment is a 4 hole non-optic swivel attachment which can be connected to any KaVo compatible unit.



FOR REPLACEMENT PARTS, CONTACT YOUR DISTRIBUTOR

ROCKSTAR POLISH SYSTEM

ROCKSTAR POLISH KIT

SKU #823011

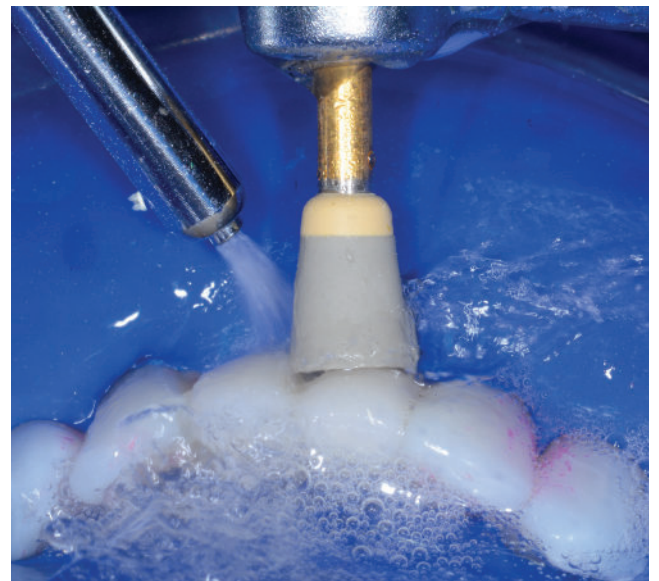


Bioclear's two-step Rockstar Polish is designed to give your composite restorations a phenomenal finish and shine and is one of the four cornerstones of the Bioclear Method.

Includes: 150g Magic Mix Paste – 100ct Magic Mix Prophy Cups – 10ct RS Polishers, Cups



Magic Mix Paste and Magic Mix Prophy Cup



RS Polisher Cup

Clinical images provided by Dr. David Clark

ROCKSTAR POLISH COMPONENTS

MAGIC MIX PASTE

SKU #700111



The first step of the Rockstar Polish, this dual abrasive pre-polish marginates to the infinity edge and creates the perfect matte finish before moving on to the second step of the Rockstar Polish – the RS Polisher.

MAGIC MIX PROPHY CUPS

SKU #623051



The Magic Mix prophy cups are part of the first step of the famous “Rockstar Polish.” The Magic Mix Prophy cups are disposable prophy cups to be used with the mint-flavored Magic Mix Pre-Polish.

RS POLISHER - CUP

SKU #623041



RS POLISHER - FLAME

SKU #623031



The RS Polisher is the final step to the famous “Rockstar Polish”. The RS polisher is to be used after the pre-polish with the Magic Mix. When used with water and heavy pressure the RS Polisher will create a mylar like surface. The updated formula creates a final polish faster than ever before without breaking down.

INSTRUMENTS

CLARK EXPLORER

SKU #500011



The Bioclear Clark Explorer's points are stiff and ideal for removing matrices.

SCULPTING POINT

SKU #500021



The special narrow tipped Bioclear Sculpting Point is used for adapting matrices & creating occlusal anatomy.

CURVED SCULPTING PADDLE

SKU #500031



The Bioclear Curved Sculpting Paddle is designed for adapting matrices and sculpting composite.

MICRO HEMOSTAT

SKU #500041



The Bioclear Micro Hemostat has a special narrow tip and is ideal for removing matrices.

SCALPEL HANDLE

SKU #500051



The ergonomic round Bioclear Scalpel Handle is great for cleaning up excess composite.

CURVED MICRO PLIERS

SKU #500061



The Bioclear Curved Micro Pliers are used for matrix placement and adaptation in both anterior and posterior restorations.

INSTRUMENTS

MATRIX SCULPTING SCISSORS

SKU #500071



The Bioclear Micro-Sculpting Scissors are sharp and small and great for trimming matrices.

TWINRING FORCEPS

SKU #500081



The Bioclear Twin Ring Forceps are specially engineered for use with the Bioclear Twin Rings.

ADJUSTABLE PUSH-PULL

SKU #500132



The Adjustable Push-Pull is a posterior instrument that is designed to expand or contract to fit a variety of preparation sizes in order to expand and oppose Evolve and Biofit matrices to ensure tight broad contacts.

BLACK TRIANGLE GAUGE

SKU #500111



The BT Gauge is for use with the color-coded BT Matrices. The use of the gauge with these color-coded matrices is designed to make black triangle closures simpler and more efficient.

EVOLVE MATRIX HEIGHT INDICATOR (EMHI)

SKU #500122



The Evolve Matrix Height Indicator (EMHI) is designed to guide matrix selection and curing. The indicator has two uses:

Matrix Height Indicator: Numbers are printed on the indicator so the correct Evolve matrix is chosen the first time.

Go/No-Go Indicator: The colored tip indicates if a cavity prep can be cured in one layer or if more must be used.

TRUCONTACT 2.0

TRUCONTACT 2.0 KIT

SKU #813002



Contact optimization is an essential part of the Bioclear Method. Natural contacts are generally too tight and too rough to allow insertion of a mylar matrix.

Bioclear TruContact Saws and Sanders are designed to work in sequence to lighten the contact which then improves the ease of placement of the mylar matrices. As an additional advantage, the TruContact also removes biofilm from the contact.

TRUCONTACT BLUE

SKU #613061



Serrated saw strip for breaking contacts.

TRUCONTACT ORANGE

SKU #613051



Single-sided Light Sander

TRUCONTACT RED

SKU #613041



Single-sided Heavy Sander

MARKETING MATERIALS

CHAIRSIDE PATIENT BOOK SKU #700331



Showcase the full potential of Bioclear and revolutionize your dental practice with our Bioclear Chairside Patient Book. Designed with both clinicians and patients in mind, this comprehensive guide is key to communicating and showcasing Bioclear anterior and posterior composite restorations.

PATIENT BROCHURES



Completely redesigned and with an expanded range of case types, the Bioclear Patient Brochures are a great addition to the office waiting room or a patient consultation. These brochures are designed to show patients some of the treatment options made possible by Bioclear in a portable format that they can take home.

Available Brochure Pack Options:

- BT + Diastema – 25 pack - SKU: 700341
- Chipping + Worn Teeth – 25 pack - SKU: 700351
- Posterior Rejuvenation – 25 pack - SKU: 700361
- Cracked Teeth – 25 pack - SKU: 700371
- Patient Brochure Variety Pack – 25 of each of the four Brochure subjects for a total of 100 brochures - SKU: 800071



BIOCLEAR

LEARNING CENTER



OUR MISSION

The Bioclear Learning Center aims to improve restorative outcomes and raise patient expectations of modern composite dental care by providing dentists with continuing education and certification in the practice of the Bioclear Method.



The Bioclear Method is a system of restorative dental procedures and protocols that, when combined in practice with Bioclear tools and materials, results in predictable, esthetically pleasing, and long-lasting patient outcomes.

The first Learning Center was built in Tacoma, Washington. International locations are now up and running. Taking a Bioclear course will connect you with doctors and patients across the globe.



ONLINE COURSES

Online courses with hands-on demonstrations are available from the comfort and convenience of your own office. The Bioclear Learning Center courses feature small class sizes with hands-on, interactive curriculum for an immersive learning experience. Online courses last one day.

IN-PERSON COURSES

The Bioclear Learning Center courses feature small class sizes with hands-on, interactive curriculum for an immersive learning experience. These courses can last between one and four days, depending on the course. Prepare to work hard and play hard; in-person courses are equally challenging and rewarding.



 **BIOCLEAR**
LEARNING CENTER

FOR MORE DETAILED INFORMATION, REQUEST THE BCLC COURSE CATALOG FROM YOUR REPRESENTATIVE OR FIND IT ONLINE AT WWW.BIOCLEARMATRIX.COM.